

GENERAL
THESE NOTES APPLY TO ALL PLANTING SHOWN
ON THE 1926.104 SERIES OF DRAWINGS.

PLANT MATERIAL
All Plants shall conform to relevant British Standards:
BS 3936 and 5326.
All plants shall be true to form, type & size. They shall be healthy, vigorous, pest and weed free.
No substitutes in size or species shall be made without the written consent of the landscape architect.

TOPSOIL & SUBSOIL
Where suitable topsoil can be recovered from site stockpiles subject to the approval of the CA. Imported topsoils to be to BS 3882:2015, if requested a comprehensive analysis of a representative sample of imported topsoil is to be made and the results made available prior to its use on site.
Depths: Planting beds 300mm; Grass areas 150mm; tree pits as specified. Subsoil formation levels shall be achieved under the main contract. The subsoil shall be ripped prior to spreading the topsoil layer.

Soiling Works - Subsoil and Topsoil spreading.
Finished levels on soil surfaces adjacent to pavings/ hardstandings shall be +30mm above top of kerb level. Generally finished soil levels shall be graded out to smooth running levels between all edges and fixed points. Subsoil formation shall be free draining and free from standing water/ waterlogging, prior to spreading topsoil to stated depths.
All debris shall be cleared prior to spreading soils.
Spreading to be carried out in suitable weather, ie not when the ground is waterlogged or frozen or during heavy rain. Machines with a ground pressure of 0.26kg/ cm shall not be used and any ground consolidated by machine tracks shall be forked over to relieve compaction.
Landscape architect to agree any final levels, adjustments and grades as required.

TREE PLANTING
Trees shall be planted into prepared pits located as shown on the drawing - 900 x 900 x 750mm deep or larger to accommodate roots as required.
Break up base to a further depth of 150mm and ensure sides are not glazed. Backfill with a mix of 70% topsoil and 30% compost. (eg a Tree & Shrub planting product, well rotted farm yard manure or other composted green waste).
Staking: Trees above 12-14cm girth to be double staked with 2nr 1.8m long stakes, untreated and driven into the ground to leave 600mm above GL. Fix with 2 nr biodegradable ties and spacers at 600mm above GL. Trees 12-14cm girth or below to be fixed as above but with 1nr stake.
Ensure trees are planted at their original ground level and water thoroughly to ground capacity after planting.
All trees planted into new/ existing grass to have a 1m diameter clear area around the trunk covered with 50mm bark mulch.
All tree planting to be kept weed free during the maintenance and defects liability period.

SHRUB PLANTING
Shrubs to be planted into prepared pits located as shown on the drawing and to be backfilled with topsoil mixed with an approved slow release fertiliser such as Enmag general purpose to the manufacturers recommended rates.
Pits to be 75mm wider than the root spread and backfill gently, firming in around the roots.
Ensure shrubs are planted at their original ground level and water thoroughly to ground capacity after planting. All shrub areas to be covered with a minimum 50mm well composted bark mulch and to be kept weed free during the maintenance and defects liability period.

MAINTENANCE
The Contractor shall supply the landscape architect with a maintenance programme for approval prior to completion.

Existing retained grass should be cut on a fortnightly cycle throughout the growing season, surplus clippings to be removed from site. Allow for trimming all edges.

All planted areas shall be maintained in a clean and tidy condition with all litter and debris being removed at least once per month. They shall also be maintained in a weed free state throughout the growing season by chemical or manual means (note: the Contractor must confirm the absence of ornamental herbaceous plants before using herbicides on planting beds).
Maintenance items shall include: Weeding, pruning (as required), firming in after frost/human damage/high winds etc, control of pests and diseases, adjusting/ repairing tree ties as required and litter and debris removal.
All plants must also receive adequate watering to ensure their health and survival.
A 50mm depth of well composted bark mulch is to be applied to all planted areas prior to handover.
Maintenance period: 12 months following Practical Completion.

TREE PLANTING MAINTENANCE
Annual maintenance to include 6nr visits to check ties and stakes and adjust where required

AMENITY GRASS
Sow seed onto 150mm depth of topsoil (imported or recovered from site storage heaps if suitable) to running levels and cultivated to a fine tilth. At least 10 days prior to seeding add pre seeding fertiliser (6:9:6), spread at a rate of 70g/ sq m, and rake in.
Seed mix to be BSH A22 low maintenance mix or similar approved, rate of spread to suppliers recommendations.
Fist Cut of Newly Seeded Areas:
Timing: When grass reaches 50-75mm height & is reasonably dry.
Remove debris, litter, earth clods and stones and cut to approximately 35mm high using a gang or cylinder mower.
Thereafter cut once per month for the remainder of the growing season to a height of 30-40mm.

NOTES

This drawing is intended for Planning Purposes and shows plant species and locations for trees, hedges and structure planting. General shrub and herbaceous planting is not shown in detail but plants will be selected from the lists on drawing 1926.110. South and west facing beds will take plants from all the lists while north and east facing beds will predominantly take plants that are noted as 'shade tolerant'.

Existing Shrub Beds Removed: The detailed planting proposals (prepared for tender) will indicated good specimen plants that can be retained or transplanted elsewhere>
All other shrubs and plants to be removed.

Existing Shrub Beds Retained: The detailed planting proposals (prepared for tender) will indicate good specimen plants that can be retained in situ. Other plants in these beds will be replaced.

PLANTING DENSITIES

Being a private and well secured site it is not anticipated that there will be problems with vandalism. Plant densities do not therefore make an allowance for plants that might be lost to vandalism.

Specimen shrubs (10Litre pots and above) to be planted singly or grouped as per the detailed planting proposals.

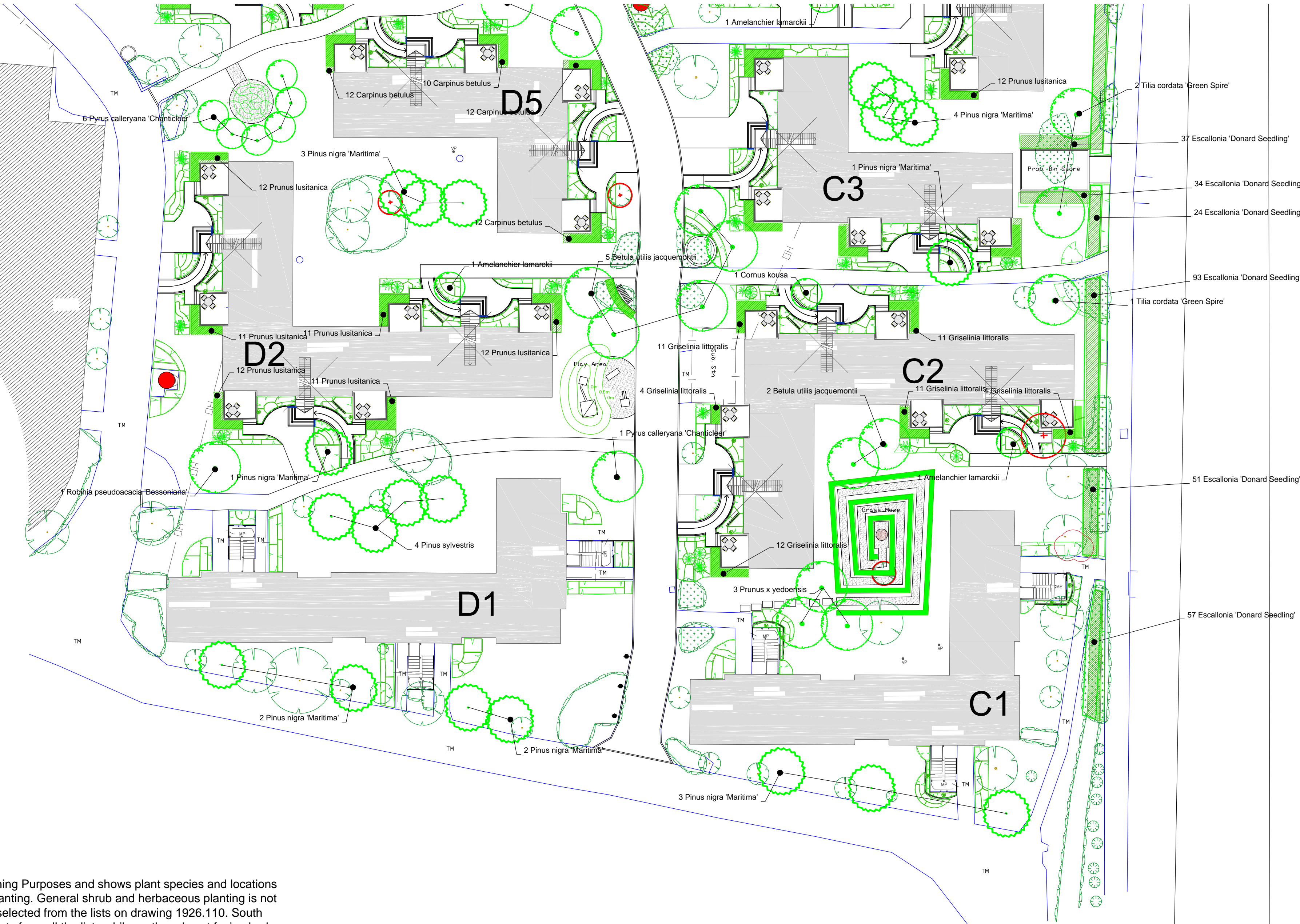
Large shrubs (those which grow to a height of 1200mm or greater) to be planted at 2-3 plants per metre squared. These plants will be specified as 3-5 litre containerised plants.

Medium and small shrubs (those which grow to a height of less than 1200mm) to be planted at 4-5 plants per metre squared. These plants will be specified as 2-3 litre containerised plants.

Large Herbaceous Grasses will be specified as 2-3 litre containerised specimens and are generally planted singly or in groups of 3 to 5 plants.

Other herbaceous plants and small herbaceous grasses will be planted at 5 to 7 plants per metre squared. These plants will be specified as 1 litre containerised plants.

Hedges to patio areas will be 80-120cm feathered plants and will be specified as container grown for evergreens and bare root for deciduous plants. If planting will fall towards the marginal ends of the planting season they will all be containerised plants. They will be planted in single rows at 3 plants per linear metre.



N
The copyright of this drawing belongs to Swan Paul Partnership Ltd and must not be issued, altered or copied without written consent from the practice.
The drawing may be scaled but in preference use dimensions if shown and in the event of doubt consult Swan Paul Partnership Ltd

KEY

- Mown grass
- Proposed shrub beds - Note all new shrub beds to be edged with a pressure treated timber edge.
- Existing shrub beds retained & planting refurbished (see planting plans)
- Existing shrub beds removed
- Feature landscaping area (eg boulders/ sleepers and planting)
- New hedge
- Proposed Specimen shrubs
- Proposed trees
- Proposed conifer trees on low mounding as privacy shelter belts
- Existing tree retained
- Existing tree removed

Planting Schedule - Trees and Hedges												
Shrub												
Name	Age	Height	Form	Girth	ClrStn	Brks	Buds	Root	Cntr	Ctr's	Qty	
Amelanchier lamarckii		150-200cm			150-175cm	5		C	25-45L	0.000	4	
Cornus kousa	3x	100-125cm				3		C	10-15L	0.450	3	
Escallonia 'Donard Seedling'		40-60cm						C	3L	0.450	742	
Escallonia macrantha		40-60cm				4		C	3L	0.350	46	
Escallonia macrantha		40-60cm				4		C	3L	0.450	44	
Griselinia littoralis		60-80cm				5		C	3-4L	0.350	102	
Griselinia littoralis		60-80cm				5		C	3-4L	0.450	53	
Ligustrum ovalifolium 'Argenteum'	2x	60-80cm				5		C	3-4L	0.350	62	
Photinia x Fraseri 'Red Robin'	3x	60-80cm				5		C	3-4L	0.350	81	
Photinia x Fraseri 'Red Robin'	3x	60-80cm				5		C	3-4L	0.450	68	
Prunus lusitanica		60-80cm				5		C	3-4L	0.350	97	
Prunus lusitanica		60-80cm				5		C	3-4L	0.450	136	
											1458	
Tree												
Name	Age	Height	Form	Girth	ClrStn	Brks	Buds	Root	Cntr	Ctr's	Qty	
Betula utilis jacquemontii	3x	425-600cm	Extra-heavy Standard	14-16cm	175-200cm	7		RB		0.000	14	
Carpinus betulus		60-80cm				3		C	3-4L	0.350	82	
Carpinus betulus		60-80cm				3		C	3-4L	0.450	46	
Fagus sylvatica 'Purpurea'	1+2 or 1/2	60-80cm	Transplant			5		C	3-4L	0.350	64	
Fagus sylvatica 'Purpurea'	1+2 or 1/2	60-80cm	Transplant			5		C	3-4L	0.450	67	
Pinus nigra 'Maritima'		250-300cm	Feathered					C	25-45L	0.000	28	
Pinus sylvestris		250-300cm	Feathered					C	25-45L	0.000	41	
Prunus avium 'Plena'	3x	425-600cm	Standard (Extra-heavy?)	14-16cm	175-200cm	5		RB		0.000	6	
Prunus serrulata 'Kanzan'			Standard	10-12cm		5		RB		0.000	2	
Prunus x yedoensis	2x	300-350cm	Standard (Selected)	10-12cm	175-200cm	5		RB		0.000	6	
Pyrus calleryana 'Chanticleer'	3x	425-600cm	Standard (Extra-heavy?)	14-16cm	175-200cm	3		RB		0.000	10	
Robinia pseudoacacia 'Bessoniensis'	3x	425-600cm	Standard (extra-heavy?)	14-16cm	175-200cm	5		RB		0.000	8	
Sorbus aucuparia 'Sheerwater Seedling'	3x	425-600cm	Standard (Extra-heavy?)	14-16cm	175-200cm	5		RB		0.000	5	
Tilia cordata 'Green Spire'	2x	425-600cm	Standard (Extra-heavy?)	14-16cm	175-200cm			RB		0.000	7	
											386	
											1844	

Revisions



SWAN PAUL
PARTNERSHIP LTD
CHARTERED LANDSCAPE ARCHITECTS

4 Charlfield House Castle Street Taunton TA1 4AS
tel: (01823) 282971
email: info@swanpaul.co.uk
www.swanpaul.co.uk

CLIENT: Butlins

PROJECT: Skegness Refurbishment

TITLE: Hard Landscaping & Setting Out
Drawing 2 of 2

Scale 1:250 at A1 Date 23.09.2015 Drawing 1926.104.2 Rev -