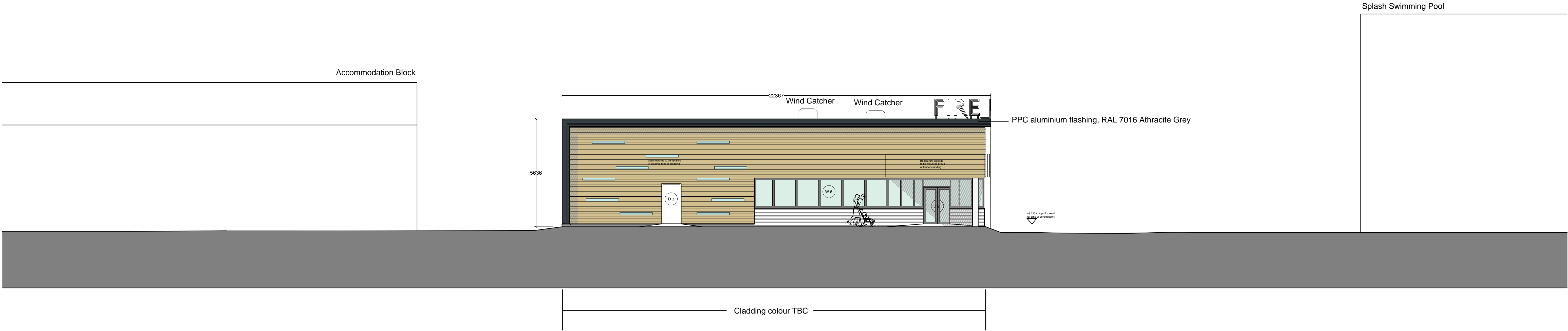


WEST ELEVATION

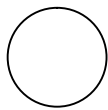


NORTH ELEVATION

notes:

revisions: A | 17.12.2013 | FW | Signage and RAL number for PPC aluminium flashing and sinusoidal metal cladding added.

revisions:



NOTE: The contractor is responsible for checking all site dimensions and levels. These should be checked prior to the ordering of any components and before the commencement of the works. All discrepancies should be brought to the attention of the Contract Administrator.

Butlins
Restaurants/Store
Skegness
drawing information

title:

status:
date:
scale:
drawn:
chk'd:

Elevations
North and West

For Planning
September 2013
1:100 @ A1
FW
JS



PWP Architects Ltd 61 South Street, Havant, Hampshire PO9 1BZ
t: 02392 482494 f: 02392 481152
e: design@pwp-architects.com
w: www.pwp-architects.com

job: 5093 dwg: 2300 rev: A